

Service Action Instruction

<p>Title</p> <h1 style="margin: 0;">ISCUS^{flex} Instruction: Service Action #68</h1>		
Part Number 8060068	Service Action No 68	
Approved: Date/Sign		
_____	_____	_____
Service	Development	Production
Marketing		

1. How to update the ISCUS^{flex} software to rev M ver. 3.0.11.44

1.1.1. Summary

This is an update of previous versions of software for ISCUSflex NG, the Windows 11 based ISCUSflex. Versions that begin with a 2 (e.g. 2.1.0.494) cannot be updated since the ISCUSflex’s using that software version is based on Win CE 5.

1.1.2. Introduction

To handle the ISCUS^{flex} analyzer software update, configuration and maintenance has to be made. In order to achieve that, proper tools have to be available.

1.1.3. Before you start

Most USB sticks work fine in ISCUS^{flex}.

1.1.4. Create an ISCUS^{flex} Service Tool

- Unzip the (ISCUS Tools and M.44, 8050255E.zip) files to an empty USB memory.

A quick look on the USB stick should reveal the following folders:

Name	Date modified
Alternate	2026-03-16 11:05
Bootup	2026-03-16 11:05
CMAPostUpdate	2026-03-16 11:05
CMAPreupdate	2026-03-16 11:05
CMAUpdate	2026-03-16 11:05
Helpers	2026-03-16 11:05
UpdateDB	2026-03-16 11:05
ViewLogFiles	2026-03-16 11:05
ViewServiceLog	2026-03-16 11:05
VNCRegistrySetting	2026-03-16 11:05
InstallHelpers	2026-02-25 16:40
Version 3.0.11.44 GIT	2026-03-16 11:09
Version 3.0.11.44 installation files	2026-03-16 11:05

1.1.5. Update an ISCUS^{flex} with software version 3.0.11.xx or later.

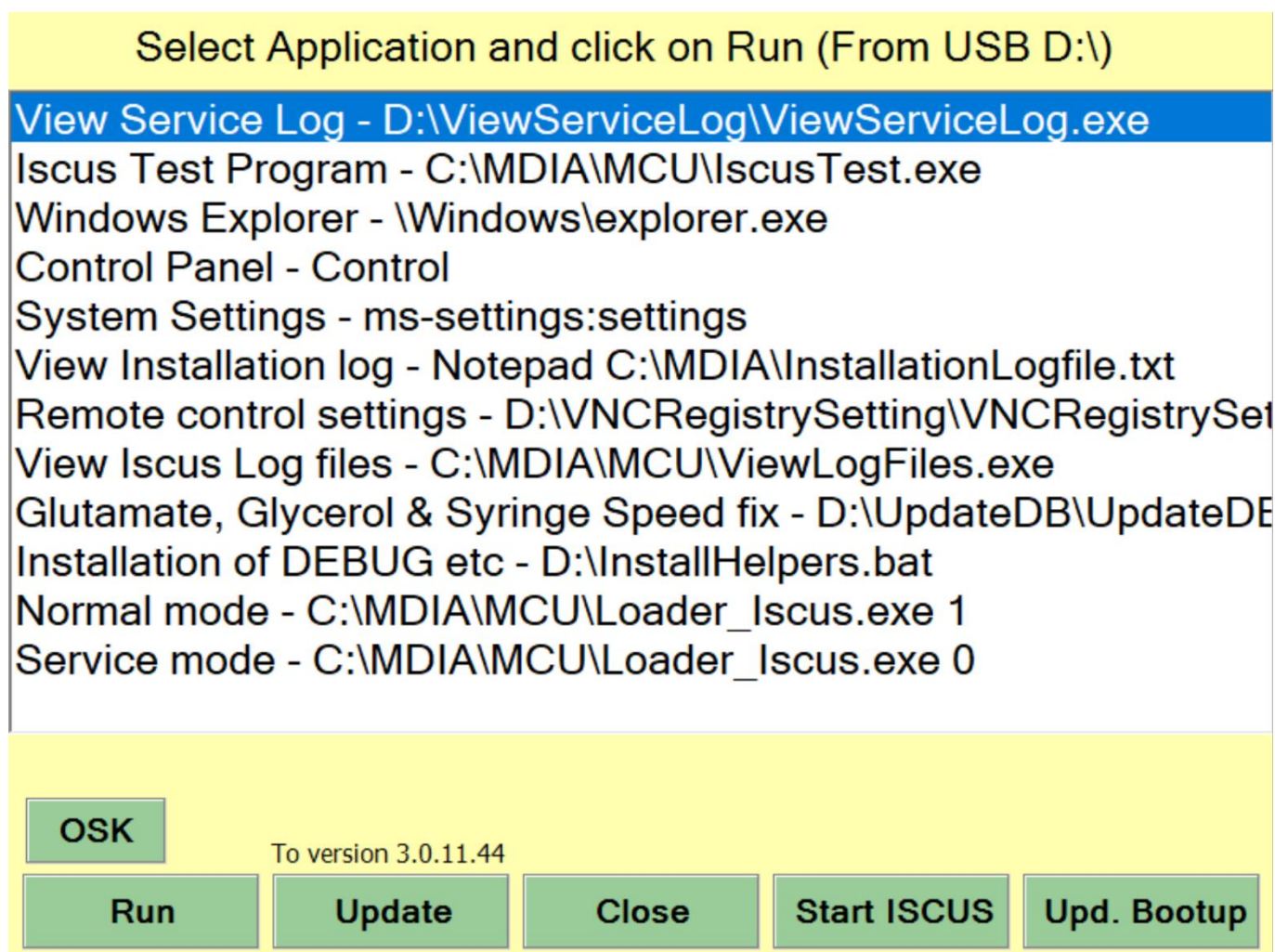
A dialog asking you to put in a USB memory is displayed, put in your USB Service Tools.

Update the software – Check that the label says “To version 3.0.11.44”, press Upd. Boot let the Boot update take place. Press Update and follow the onscreen messages.

To run an application Select it and Press Run.

Press OSK to get an OnScreen Keyboard if required.

1.1.6. Service Tools menu



1.1.7. View Service Log

Shows the service log entries (not calibrations)

1.1.8. ISCUS Test program

Only for advanced trouble shooting

1.1.9. Windows Explorer

For advanced service engineers handling the inner file structure of the ISCUS^{flex} software. **Caution, incorrect handling may lead to malfunction.**

1.1.10. Control Panel

For configuration issues like language, network settings etc. **Caution, incorrect handling may lead to malfunction.**

1.1.11. System Settings

For configuration issues (default method for Windows 11) . **Caution, incorrect handling may lead to malfunction.**

1.1.12. View Installation log

Show installation history

1.1.13. Remote control settings

For various settings not found in the Control Panel. E.g. editing the hosts file for localhost and localhost2 settings.

1.1.14. View ISCUS log files

For viewing internal log files; AirGapLog.txt, ActivityLog.txt, TemperatureLog.txt, CellTemperatureLog.txt, ProdLog.txt, All-ProdLog.txt and QCData.txt.

1.1.15. Glutamate, Glycerol and Aspirate Speed Fixes. Service/PM interval

Starts program for installing the Glutamate Fix, the Glycerol Fix and/or the Aspirate Speed Fix. Set service (PM) interval. Also used for setting the Pyruvate low calibration Linearity limit and Urea Initial blank level.

1.1.16. Installation of Debug

Runs the batch file InstallHelpers.bat. Installs OnlineLogger, DebugFileScannerForISCUSflex and copies 8002701H for installation of IscusCollect.

1.1.17. Normal mode

Start software in normal mode

1.1.18. Service mode

Start software in Service mode

2. For CLIA users

2.1. With a barcode scanner

By issuing the service code:

CLIA NOMINAL CL CALC

It is possible to scan only the CLIA limits and get the proper Nominal Control levels.

2.2. Without a barcode scanner

By issuing the service codes:

CLIA NOMINAL CL MANUAL CALC

It is possible to enter the CLIA limits and lot number manually, followed by pressing the Recalc. button to automatically get the correct Nominal Control Levels.