

- For early detection of brain ischemia
- “Gold Tip” visible on CT

## 70 Brain Microdialysis Catheter

The sterile, single use 70 Microdialysis Catheter is minimally invasive and is a highly flexible catheter designed for implantation in brain tissue. Two models of 70 Microdialysis Catheters are available with different shaft lengths suitable for stereotaxical as well as manual implantation.

The 70 Microdialysis Catheter is tunneled under the scalp. It is then inserted into the brain tissue through a hole drilled in the skull bone. The dialysing membrane of the catheter has been specially designed to achieve optimal diffusing characteristics. This allows a high recovery of substances from the extracellular fluid into the catheter.

### The “Gold tip” makes the catheter visible on CT

The tip of the catheter contains a gold thread. The “Gold tip” is visible on CT-scanning and makes it possible to locate the exact position of the catheter.

### Early detection of local tissue ischemia

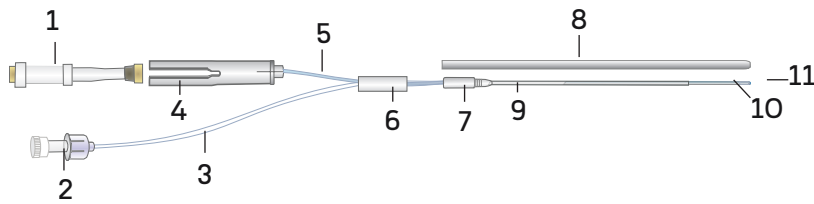
The 70 Brain Microdialysis Catheter is connected to the 106 Microdialysis Pump and perfused with Perfusion Fluid. The outlet tube extends to a holder for a microvial that collects the dialysis sample. The microvials are usually changed in the end of every hour and the samples are transferred to and then analyzed in the ISCUS<sup>flex</sup> Microdialysis Analyzer. This system provides an ideal clinical solution for early detection of metabolic crisis and ischemia in the brain.

### Indication for use

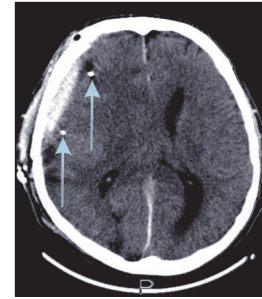
Patients with clinical signs of brain injury or brain disease where craniotomy is required for diagnosis or therapy e.g. monitoring of ischemia in patients suffering traumatic brain injury (TBI) and subarachnoid hemorrhage (SAH).

Microdialysis shall not be used as the sole basis for diagnosis or therapy.

# Parts of the 70 Brain Microdialysis Catheter



1. Microvial - accessory (polystyrene + santoprene)
2. Luer lock connection (polycarbonate)
3. Inlet tube (polyurethane)
4. Vial holder (polycarbonate)
5. Outlet tube (polyurethane)
6. Stopper (silicone)
7. Liquid cross (polysulfone)
8. Protection tube (polyethylene)
9. Shaft (polyurethane)
10. Dialysis membrane (polyaryethersulphone)
11. Gold thread within the catheter tip



The distal part of the catheter has a gold thread (3 x 0.13 mm) within the catheter tip, which makes the catheter location in the tissue visible on CT

## Technical information

MATERIAL		LENGTH mm		Ø mm
		P000049	P000050	
shaft	polyurethane	60	100	OD 0.9
membrane	polyarylethersulphone	10	10	OD 0.6
inlet tube	polyurethane	600	600	OD 1.0
outlet tube	polyurethane	220	220	OD 1.0

## Ordering information

	Ref. No.
70 Brain Microdialysis Catheter 60/10, 4/pkg	P000049
70 Brain Microdialysis Catheter 100/10, 4/pkg	P000050

## Accessories

	Ref. No.
Microvials 250/pkg	P000001
Microvial Rack 12/pkg	P000028

**STERILE** | **R** Sterilized by  $\beta$ -radiation



Storage temperature: 4-25 °C



Single use only



Shelf life: 2 years from the manufacturing date