

- For bolt implantation
- “Gold Tip” visible on CT
- For early detection of brain ischemia
- Reinforced shaft

70 Microdialysis Bolt Catheter

This sterile, single use catheter is minimally invasive and designed for implantation in brain tissue through the IM2 Bolt Kit for 2 Brain Probes or the IM3 Bolt Kit for 3 Brain Probes from Integra. The catheter has a 130 mm long shaft and a membrane length of 10 mm. The shaft has a reinforced stainless steel section measuring 16.5 mm in length. This reinforcement is located where the compression screw of the bolt is tightened and helps prevent flow obstruction.

The dialysing membrane of the catheter has been specially designed to achieve optimal diffusing characteristics. This allows a high recovery of substances from the extracellular fluid into the catheter.

The “Gold tip” makes the catheter visible on CT

The tip of the catheter contains a gold thread. The “Gold tip” is visible on CT-scanning and makes it possible to locate the exact position of the catheter.

Clinical solution for early detection of ischemia

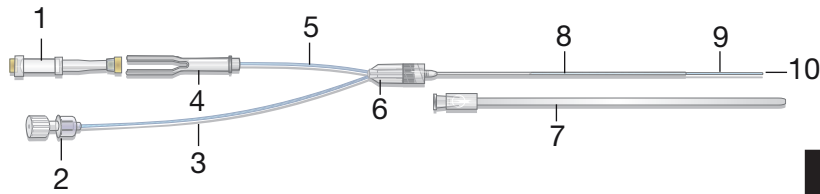
The 70 Microdialysis Bolt Catheter is connected the 106 Microdialysis Pump and perfused with Perfusion Fluid. The outlet tube extends to a holder for a microvial that collects the dialysis sample. The microvials are usually changed in the end of every hour and the samples are transferred to and then analyzed in the ISCUS^{flex} Microdialysis Analyzer. This system provides an ideal clinical solution for early detection of metabolic crisis and ischemia in the brain.

Indication for use

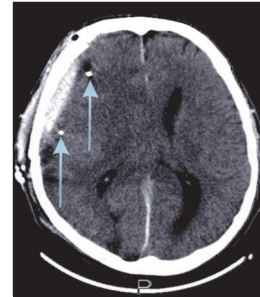
Patients with clinical signs of brain injury or brain disease where craniotomy is required for diagnosis or therapy e.g. monitoring of ischemia in patients suffering traumatic brain injury (TBI) and subarachnoid hemorrhage (SAH).

Microdialysis shall not be used as the sole basis for diagnosis or therapy.

Parts of the 70 Microdialysis Bolt Catheter



1. Microvial (polystyrene + santoprene)
2. Luer lock connection to syringe (polycarbonate)
3. Inlet tube (polyurethane)
4. Vial holder (polycarbonate)
5. Outlet tube (polyurethane)
6. Liquid cross with luerlock connection (ABS)
7. Protection tube (polyethylene)
8. Shaft (polyurethane) with a 16.5 mm stainless steel re-inforcement
9. Dialysis membrane (polyarylethersulphone)
10. Gold thread within the catheter tip



The distal part of the catheter has a gold thread (3 x 0.13 mm) within the catheter tip, which makes the catheter location in the tissue visible on CT

Technical information

	MATERIAL	LENGTH mm	Ø mm
shaft	polyurethane	130	OD 0.9
membrane	polyarylethersulphone	10	OD 0.6
inlet tube	polyurethane	600	OD 1.0
outlet tube	polyurethane	220	OD 1.0

Ordering information

	Ref. No.
70 Microdialysis Bolt Catheter 4/pkg	P000131

Accessories

	Ref. No.
Microvials 250/pkg	P000001
Microvial Rack 12/pkg	P000028
Microvials in rack, Sterile 12x4	P000154

STERILE | R

Sterilized by β -radiation



Storage temperature: 4-25 °C



Single use only



Shelf life: 2 years from the manufacturing date